

FOR LEASE

Graham Square Stow, Ohio

Retail Pad with .542 acres for lease



Description: Located on the outlot of Graham Square just West of Graham and Route 8. The lot shares a drive with Taco Bell.

Nearby Tenants: SuperWalmart, Lowe's, Planet Fitness, The Cleveland Clinic, Save A Lot, Auto Zone, Fifth Third Bank, Pet Valu, Affordable Uniforms, Café O'Play, Nicholas Financial, Pulp Smoothie, Subway, Jet's Pizza, Jersey Mike's Subs, etc.

Demographics:

Population:

1 mile: 9,436

3 miles: 51,609

5 miles: 129,694

Average Household Income:

1 mile: \$72,516

3 miles: \$75,800

5 miles: \$65,693



For more information contact:

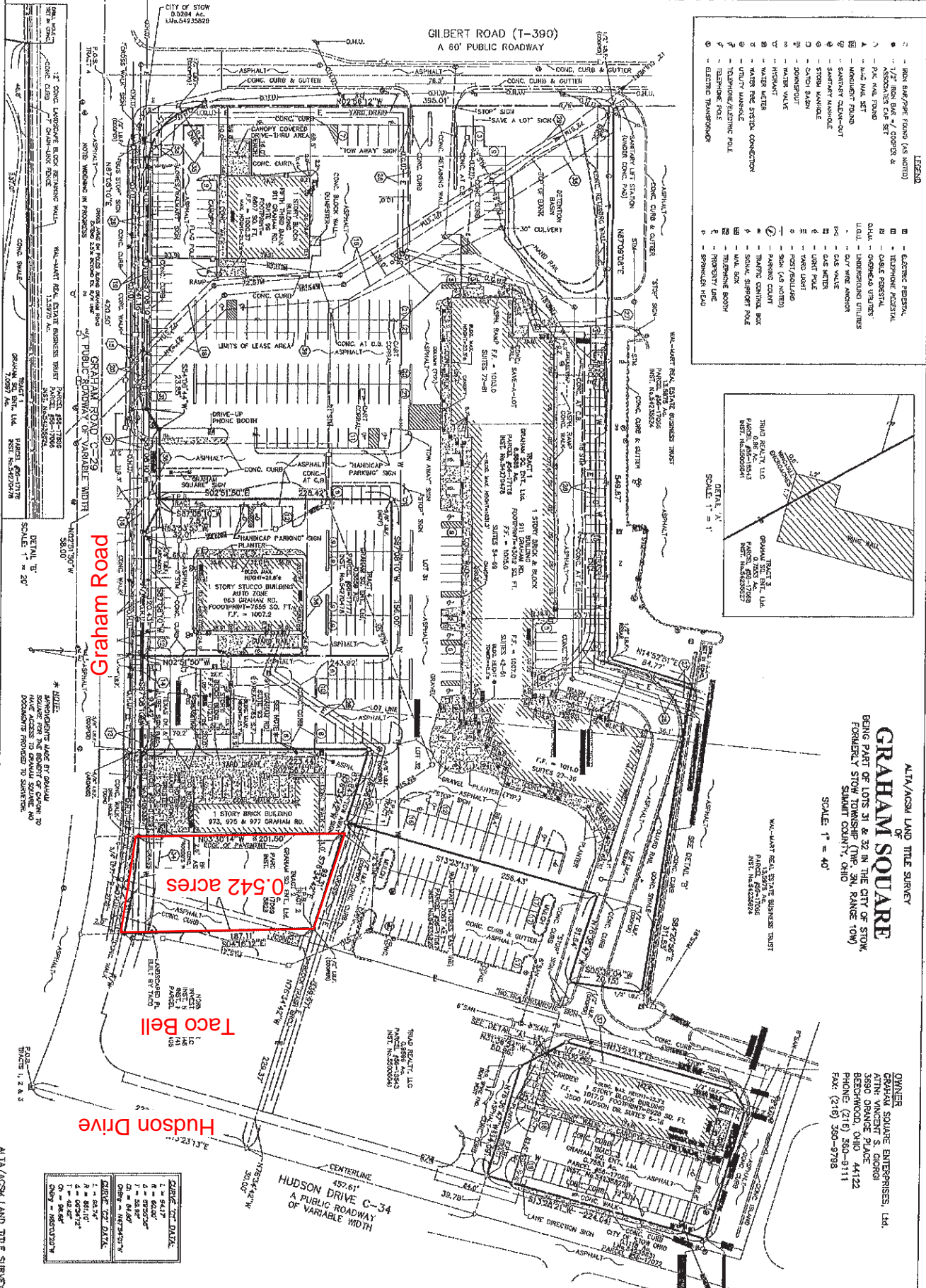
Craig Cohen

Craig@CohenCommercialGroup.com

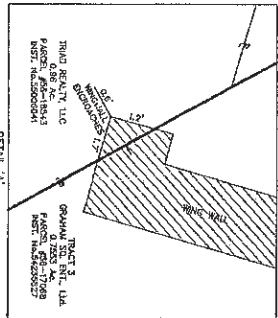


Cohen Commercial Group
3690 Orange Place, Suite 111
Beachwood, Ohio 44122
(216) 223-5060

The information submitted herein is not guaranteed. Although obtained from reliable sources, it is subject to errors, omissions, prior sale/lease and withdrawal from the market without notice. Cohen Commercial Group, its affiliates, agents, and employees, and Seller/Landlord make no representations about the accuracy of said information and recommend individual investigation to certify its validity.



- LEGEND**
- 1 - 800 AMP/200' TOWER (AS NOTED)
 - 2 - 100' RADIUS OF CURVE (R)
 - 3 - ASSOCIATES CAP SET
 - 4 - 1/4" DIA. ROAD
 - 5 - 1/4" DIA. ROAD
 - 6 - 1/4" DIA. ROAD
 - 7 - 1/4" DIA. ROAD
 - 8 - 1/4" DIA. ROAD
 - 9 - 1/4" DIA. ROAD
 - 10 - 1/4" DIA. ROAD
 - 11 - 1/4" DIA. ROAD
 - 12 - 1/4" DIA. ROAD
 - 13 - 1/4" DIA. ROAD
 - 14 - 1/4" DIA. ROAD
 - 15 - 1/4" DIA. ROAD
 - 16 - 1/4" DIA. ROAD
 - 17 - 1/4" DIA. ROAD
 - 18 - 1/4" DIA. ROAD
 - 19 - 1/4" DIA. ROAD
 - 20 - 1/4" DIA. ROAD
 - 21 - 1/4" DIA. ROAD
 - 22 - 1/4" DIA. ROAD
 - 23 - 1/4" DIA. ROAD
 - 24 - 1/4" DIA. ROAD
 - 25 - 1/4" DIA. ROAD
 - 26 - 1/4" DIA. ROAD
 - 27 - 1/4" DIA. ROAD
 - 28 - 1/4" DIA. ROAD
 - 29 - 1/4" DIA. ROAD
 - 30 - 1/4" DIA. ROAD
 - 31 - 1/4" DIA. ROAD
 - 32 - 1/4" DIA. ROAD
 - 33 - 1/4" DIA. ROAD
 - 34 - 1/4" DIA. ROAD
 - 35 - 1/4" DIA. ROAD
 - 36 - 1/4" DIA. ROAD
 - 37 - 1/4" DIA. ROAD
 - 38 - 1/4" DIA. ROAD
 - 39 - 1/4" DIA. ROAD
 - 40 - 1/4" DIA. ROAD
 - 41 - 1/4" DIA. ROAD
 - 42 - 1/4" DIA. ROAD
 - 43 - 1/4" DIA. ROAD
 - 44 - 1/4" DIA. ROAD
 - 45 - 1/4" DIA. ROAD
 - 46 - 1/4" DIA. ROAD
 - 47 - 1/4" DIA. ROAD
 - 48 - 1/4" DIA. ROAD
 - 49 - 1/4" DIA. ROAD
 - 50 - 1/4" DIA. ROAD
 - 51 - 1/4" DIA. ROAD
 - 52 - 1/4" DIA. ROAD
 - 53 - 1/4" DIA. ROAD
 - 54 - 1/4" DIA. ROAD
 - 55 - 1/4" DIA. ROAD
 - 56 - 1/4" DIA. ROAD
 - 57 - 1/4" DIA. ROAD
 - 58 - 1/4" DIA. ROAD
 - 59 - 1/4" DIA. ROAD
 - 60 - 1/4" DIA. ROAD
 - 61 - 1/4" DIA. ROAD
 - 62 - 1/4" DIA. ROAD
 - 63 - 1/4" DIA. ROAD
 - 64 - 1/4" DIA. ROAD
 - 65 - 1/4" DIA. ROAD
 - 66 - 1/4" DIA. ROAD
 - 67 - 1/4" DIA. ROAD
 - 68 - 1/4" DIA. ROAD
 - 69 - 1/4" DIA. ROAD
 - 70 - 1/4" DIA. ROAD
 - 71 - 1/4" DIA. ROAD
 - 72 - 1/4" DIA. ROAD
 - 73 - 1/4" DIA. ROAD
 - 74 - 1/4" DIA. ROAD
 - 75 - 1/4" DIA. ROAD
 - 76 - 1/4" DIA. ROAD
 - 77 - 1/4" DIA. ROAD
 - 78 - 1/4" DIA. ROAD
 - 79 - 1/4" DIA. ROAD
 - 80 - 1/4" DIA. ROAD
 - 81 - 1/4" DIA. ROAD
 - 82 - 1/4" DIA. ROAD
 - 83 - 1/4" DIA. ROAD
 - 84 - 1/4" DIA. ROAD
 - 85 - 1/4" DIA. ROAD
 - 86 - 1/4" DIA. ROAD
 - 87 - 1/4" DIA. ROAD
 - 88 - 1/4" DIA. ROAD
 - 89 - 1/4" DIA. ROAD
 - 90 - 1/4" DIA. ROAD
 - 91 - 1/4" DIA. ROAD
 - 92 - 1/4" DIA. ROAD
 - 93 - 1/4" DIA. ROAD
 - 94 - 1/4" DIA. ROAD
 - 95 - 1/4" DIA. ROAD
 - 96 - 1/4" DIA. ROAD
 - 97 - 1/4" DIA. ROAD
 - 98 - 1/4" DIA. ROAD
 - 99 - 1/4" DIA. ROAD
 - 100 - 1/4" DIA. ROAD



ALTA/CSM LAND TITLE SURVEY
GRAHAM SQUARE
 BEING PART OF LOTS 31 & 32 IN THE CITY OF STOW,
 FORMERLY STOW TOWNSHIP (TWP. 3N, RANGE 10W)
 SUMMIT COUNTY, OHIO
 SCALE: 1" = 40'

OWNER
 GRAHAM SQUARE ENTERPRISES, LTD.
 ATTN: VINCENT S. COOPER
 3590 ORANGE PLACE
 BEECHWOOD, OHIO 44122
 PHONE: (216) 580-9111
 FAX: (216) 580-9798

NO.	DATE	DESCRIPTION
1	7/24/14	FINAL
2	7/24/14	REVISION
3	7/24/14	REVISION
4	7/24/14	REVISION
5	7/24/14	REVISION

ALTA/CSM LAND TITLE SURVEY
GRAHAM SQUARE
 BEING PART OF LOTS 31 & 32 IN THE CITY OF STOW,
 FORMERLY STOW TOWNSHIP (TWP. 3N, RANGE 10W)
 SUMMIT COUNTY, OHIO
 FOR: GRAHAM SQUARE ENTERPRISES, LTD.

COOPER & ASSOCIATES, LLP
 ENGINEERS AND SURVEYORS
 BRYAN J. ASSMAN
 JEROLD E. GARDNER
 PHONE: (216) 463-6751
 FAX: (216) 463-6110

STATE OF OHIO
 1333 MARKET AVENUE, NORTH CANTON, OHIO 44714

REVISIONS

NO.	DATE	DESCRIPTION
1	7/24/14	FINAL
2	7/24/14	REVISION
3	7/24/14	REVISION
4	7/24/14	REVISION
5	7/24/14	REVISION

SCALE: 1" = 40'